

The Hocking Hills Sixty Years Ago

What a difference sixty years can make!

The first land purchased for public use in Hocking County was Ash Cave in 1925. They drove Model A's to get there!

These pictures were taken about fifteen years later. It is interesting to see how many improvements have been made to the park and to see how much the trees have grown in seventy five years!



Ash Cave State Park



Shelter House at Cantwell Cliffs



Steps at Cantwell Cliffs



Shelter House at Rock House



Stone Bridge at Rock House



Lower Gorge at Cedar Falls



Upper Falls at Old Man's Cave



Sphinx Head at Old Man's Cave



*Lower Falls at
Old Man's Cave*



*Upper Gorge
Old Man's Cave*



*Upper Falls
at Old Man's Cave*



Ranger at the Ranger Station at Old Man's Cave



Tunnel and Stone Bridge, Old Man's Cave.
Hocking Co. Ohio.



Interior of Old Man's Cave



Scene at Old Man's Cave



Rocks and Steps at Upper Gorge
Old Man's Cave



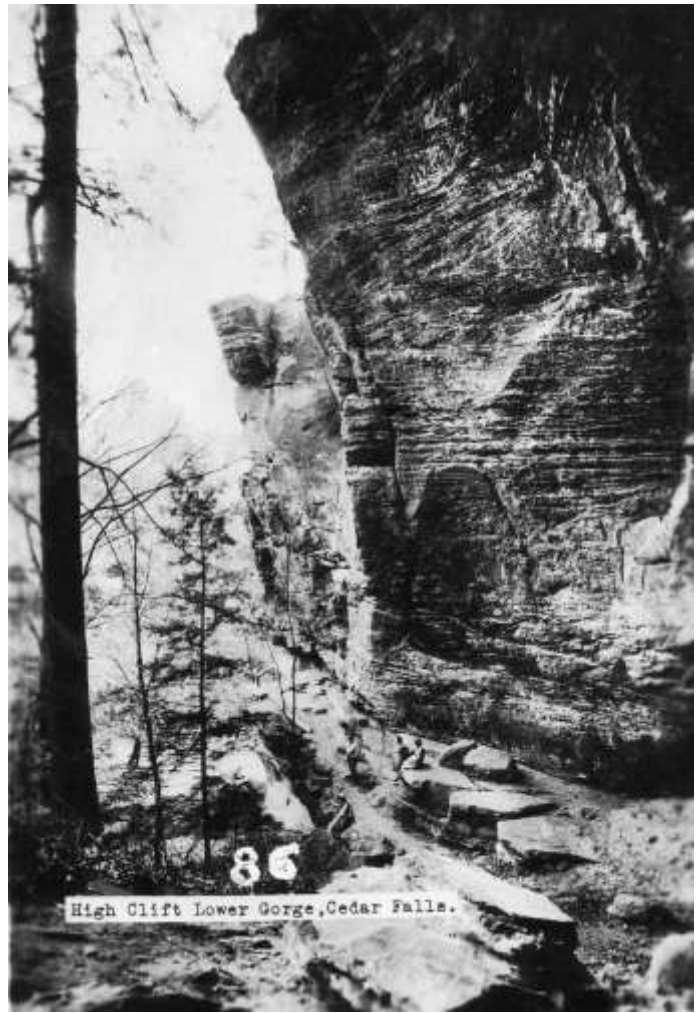
Cedar Falls



Gorge at Conkle's Hollow



Cantwell Cliff Trail



Lower Gorge Cedar Falls



Pulpet Rock at Ash Cave State Park